

CITY OF SHIVELY NEWS

Vol. 34 No. 8

www.ShivelyKy.gov

May 2025

u u u

CITY HALL INFORMATION
Council Meetings- All residents are welcome to attend meetings.

City Council meetings are held the 1st & 3rd Mondays monthly, at 6:45 pm, meetings are open to the public. Anyone that wants to speak during a Regular City Council meeting must write their name, address, phone number and topic on the sign in sheet, PRIOR to 6:45 PM when the meeting begins.

Council meetings are held in City Council Chambers, 1st Floor, 3920 Dixie Hwy. If you have questions, or need additional information, please contact city hall (502) 449-5000, or email mitzi.kasitz@shivelyky.gov. Meeting dates and times are available on the city web page, <https://shivelyky.gov/events/>.

SHIVELY ORDINANCES CAN BE
ACCESSED 24/7 ONLINE from
www.shivelyky.gov
OR
<https://codebook.amlegal.com/codes/shively/latest/overview>

From the Office of the Mayor



A Delicious Spring Celebration in Shively

On April 12, the community of Shively gathered for a delightful Pancake Breakfast and Easter Egg Hunt that brought smiles and joy to all. The aroma of sizzling bacon and freshly cooked pancakes filled the air as families arrived at the community center, excited for a day of fun and festivities.

The breakfast spread was a feast for the senses, featuring fluffy pancakes, crispy bacon, creamy sausage and gravy, fluffy biscuits, and beverages, including fresh brewed coffee, refreshing orange juice, and chilled milk. Residents chatted and laughed as they enjoyed their meals, creating a warm and welcoming atmosphere.

After breakfast, the excitement shifted to the outdoor area where 3,999 colorful Easter eggs awaited eager hunters. The children, their baskets in hand, dashed across the lawn, squealing with delight as they discovered hidden treasures. Laughter echoed as they found eggs filled with candy and surprises, each one a little piece of joy.

Adding to the day's charm was a petting zoo where kids could interact with adorable animals, creating unforgettable memories. The Easter egg hunt ended with two shiny bicycles being awarded, which thrilled the lucky winners and made the day even more special.

A heartfelt thank you goes out to all the department heads, city council members, the fire department, the works department, and the police department, whose support made this event possible. Special thanks to the dedicated volunteers who worked tirelessly to ensure everything ran smoothly. Your efforts truly made this celebration a tremendous success!

The residents of Shively left with full bellies and happy hearts, already looking forward to next year's festivities. This memorable day reminded everyone of the importance of community and the joy of coming together to celebrate the season.

u u u

Spring Family Fun in Shively

Pancake Breakfast • Easter Egg Hunt • Petting Zoo

Celebrating community, sunshine, and smiles!



FOOD TRUCK *Fridays*



11
JULY, 2025
5pm - 9pm

Shively Park, 1901 Park Road

Come out and purchase good food
and listen to great music.
DON'T FORGET YOUR LAWN CHAIRS

Sponsored by Mayor Maria Johnson

CANCELLED

JOIN US FOR

Food  *Truck*



FRIDAYS

Come out and purchase some good food and listen to great music.

Friday, June 13th, 2025

5:00pm – 9:00pm

Shively Park, 1901 Park Road

Sponsored by Mayor Maria Johnson

BRING YOUR LAWN CHAIR!



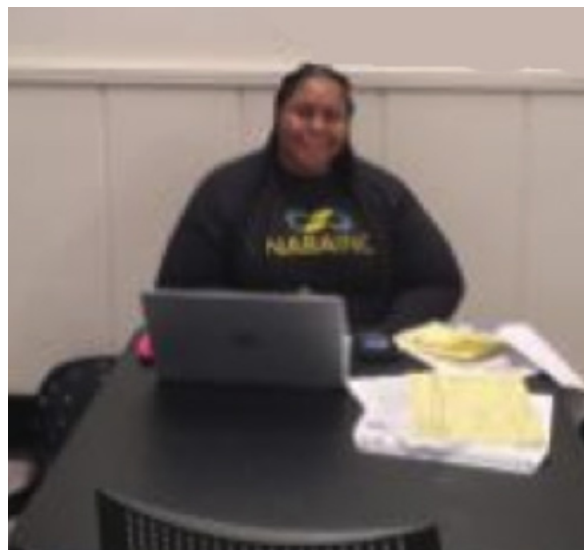
VITA TAX

For nearly three months, a dedicated group of volunteers from the Great Louisville Chapter of NABA, Inc. gave their time and talent to help the community navigate tax season—free of charge. From January 26 through April 14, seven NABA members — Ke’Aira Wooden-Brown, Jerrika “Rika” Hughes, Charika Hughes, Gina Gunn-Sanchez, Danny Wooten, Freida Winkfield Shaw, and Ja’Kim Keene — volunteered as part of the IRS’s Volunteer Income Tax Assistance (VITA) program and Louisville Assets Building Coalition at Shively City Hall. Together, they contributed more than 325 collective hours, assisting individuals and families with tax preparation every Sunday from 1:00 to 5:00 p.m. and every Monday from 5:00 to 8:00 p.m. Their efforts paid off! Over the course of the program, the team successfully helped local residents file more than 400 tax returns, saving taxpayers an estimated tens of thousands in preparation fees while helping them access key credits and refunds. “The work we do through the VITA program isn’t just about filing taxes—it’s about financial empowerment,” said Charika, one of the lead coordinators for the chapter’s VITA effort. “Many of the people we help aren’t just getting a refund; they’re gaining peace of mind and a stronger financial footing.” The VITA program, backed by the IRS, offers free tax help to people who generally make

\$64,000 or less, persons with disabilities, and limited English-speaking taxpayers. Volunteers undergo extensive training and certification to ensure returns are accurate and compliant with federal and state tax laws. “Some of our clients were senior citizens on fixed incomes, others were young families just trying to make ends meet,” said Rika, a longtime NABA member and returning VITA volunteer. “They walk in anxious, but they leave with confidence. That’s why we do this.” The Great Louisville NABA chapter has a history of community engagement, and their commitment to financial literacy and service continues to grow. This year’s VITA initiative at Shively City Hall marks one of the chapter’s most successful efforts to date, with both turnout and impact exceeding expectations. City officials also expressed their gratitude, noting the vital role the program plays in supporting the financial well-being of Shively residents. As tax season comes to a close, the volunteers are already looking ahead. “We’re proud of what we’ve accomplished,” said Ke’Aira, “but we know the work doesn’t stop here. Next year, we want to do even more.”



For now, the Great Louisville Chapter of NABA closes out another season of service with the satisfaction of knowing their time made a real difference—one return at a time.



SHIVELY FIRE DEPARTMENT



This year marks the **72nd Anniversary of the Crusade for Children** and this year the Crusade will be held June 7 - 8, 2025. For 72 years, fire departments have raised millions of dollars for the WHAS Crusade for Children, which distributes funds to schools, hospitals and organizations that provide critical services to children with special needs across Kentucky and Indiana. The Shively Fire Department and Shively Businesses have always supported this worthy cause for our special children of the Kentuckian Region.

If you are able, we ask that you please join our campaign and help us reach our goal of \$16,000 for the WHAS Crusade for Children. We need you to tell your friends and family members about the important impact the Crusade has made on our youngest neighbors.

One way to support is by making your checks payable to the **WHAS Crusade for Children**, put your contribution into the **Shively Fire Department**, or call us at **502-449-5025** and we will send a representative of the fire department to pick up the check. Giving to the Crusade and crediting the Shively Fire Department has never been easier! You can continue the traditional method of giving by mailing a check to the WHAS Crusade for Children, located at 520 W. Chestnut St., Louisville, KY 40202. Or, you can give virtually in a variety of easy ways:

- Donate online at www.whascrusade.org. Be sure to list the Shively Fire Department to receive credit!
- Text **CRUSADE to 50155** to give securely via your cell phone. You will have the option to credit our fire dept.
- **Venmo** donation @CrusadeForChildren and list our fire dept. in the comment section.
- **CashApp** donation \$CrusadeChildren and list our fire dept. in the note section.

Thank you for your generosity during this Crusade season!

FOOD TRUCK INSPECTIONS:

Based off many dangerous incidents involving trucks/trailers throughout the United States in 2015 the National Fire Protection Association adopted code language in that edition of NFPA 1 Fire Prevention Code a section dealing with food trucks and trailers. In 2022, Kentucky adopted the 2018 edition of NFPA 1, which officially had the language the fire service needed (or required) to inspect food trucks/trailers.

Food Trucks are inspected under LMCO 115.351 and the inspection now has several parts to it. The first is a fire inspection is required by any fire department in Jefferson County. Then they have an inspection done by Louisville Metro Health and then the last step is an inspection by Metro ABC. Once this is done ABC will issue the truck/trailer a sticker to be placed on the unit.

In January 2024 enforcement of this requirement officially began and Units without a valid ABC sticker (Blue for 2025) will be shut down if found operating. If found, we will call for a Metro ABC officer who will do the closure and write any citations.

What we look for in an inspection:

Kitchen vent hood and suppression is proper and has a current inspection.

- Cooking appliance all under the kitchen hood.
- Fire extinguishers; one ABC type; one K type
- When set up all truck/trailers a minimum of 10' clearance from buildings/ combustibles/other trucks/trailers.
- Main shut offs for electrical and gas are identified.
- If propane is used cylinders secured upright, protected from impact on outside, and a means to prevent from tipping over if ground usage.
- Can't be parked in fire lanes or other area blocking FDC or fire hydrants.
- Training required for all workers and documentation of said training.
- If generators are used exhaust minimum of five feet away from openings to truck/trailer.
- Leak test done on propane system and documentation of testing kept in truck/trailer.
- All appliances used for cooking are listed appliances.

Anyone in need of an inspection in the Shively area should contact Mr. Mike Allendorf in the Fire Marshal's office at 502-449-5045.

"Fire Safety first, Prevent and Protect!!"

Col. Charles D. Mucker
Fire Chief
Shively Fire Department
1800 Park Drive
Shively, KY 40216
Office: 502-449-5020

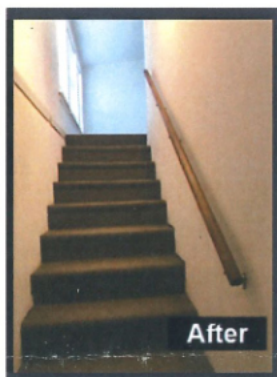


KIPDA

Kentuckiana Regional Planning
& Development Agency



- The CAPABLE program is a FREE program developed by Johns Hopkins to help older adults live safely in their homes. CAPABLE participants set their own goals they would like to reach in 4 to 5 months.
- During that time a CAPABLE-trained Occupational Therapist (OT), Registered Nurse (RN) and handy-worker alternate making home visits.



- The Occupational Therapist works on tasks like dressing, bathing, cooking, grooming and moving around your house.
- The Nurse works with participants to manage pain, mood, medications, fall prevention and incontinence.
- The Handy-worker makes minor home repairs to help with moving around your home safely.



Participant Eligibility Requirements

- ☐ 60 years of age or older
- ☐ Lives in Jefferson, Oldham or Bullitt County
- ☐ Is not above 60% of Area Median Income
- ☐ Is cognitively intact or has only mild cognitive impairment
- ☐ Must be able to participate in the brainstorming and action planning process
- ☐ Has difficulty in performing Activities of Daily Living (ADLs), such as bathing, dressing, grooming, or walking across a small room
- ☐ Has a history of falls or is at high risk for falls, e.g., vision problems, balance problems
- ☐ Requires minor home modification to ensure safety: could include grab bars, raised toilet seat, other low-cost modification, or equipment
- ☐ Owns home or lives with homeowner
- ☐ Does not plan on relocating in the next 6 months
- ☐ Medically stable and not likely to be in and out of the hospital
- ☐ Is not on hospice and not likely to need hospice for the next 6 months

In-Home Services Include:

- 8-10 total visits between Occupational Therapist and Registered Nurse
- Minor home repair, modifications and assistive devices

Contact us to learn more:

www.kipda.org

502-266-5571



KIPDA

Kentuckiana Regional Planning
& Development Agency

This information is made possible by state and/or federal funding provided by the Kentucky Department for Aging and Independent Living.

Senior CommUnity Care of Kentucky

PACE



Surrounding you with the care you need,
to remain in the home you love.

Serving Jefferson County



The Program of All Inclusive Care for the Elderly (PACE) model is centered on the belief that the well-being of seniors with chronic care needs and their families are better served in the community.

Senior CommUnity Care provides health care and supportive services enabling older adults to sustain independence and continue living in their home whenever possible. We are a service of Volunteers of America, a non-profit, organization.

Enrollment

Our Enrollment Specialist will meet with you and a family member or caregiver to explain the program. They will do an assessment of your eligibility and schedule a visit to our Center and a meeting with your doctor, nurses and other key staff. You will receive a medical evaluation and a custom care plan.

We complete the enrollment paperwork for you to become a participant. Enrollment is voluntary. You may disenroll at any time by notifying the Senior CommUnity Care of Kentucky social worker.

Eligibility

Seniors are eligible for this program if they:

- Are 55 or older
- Live in the service area
- Meet nursing home level of care certified by the state.
- Can live safely at home with our services

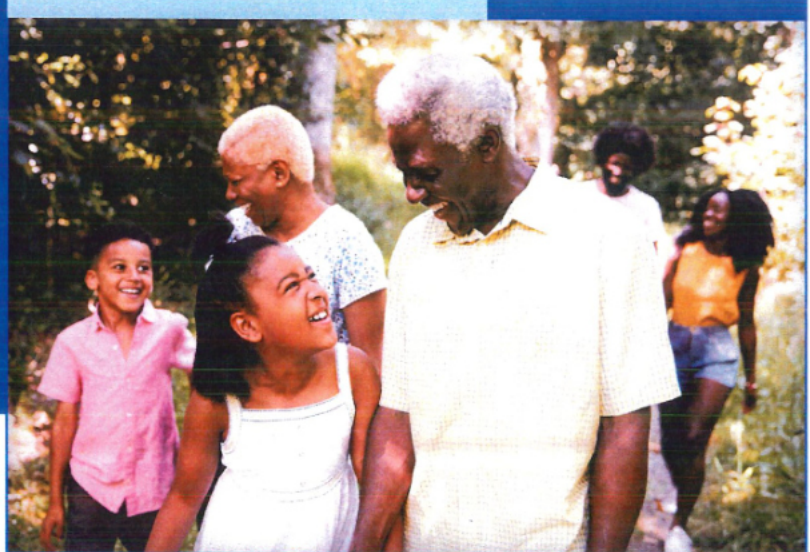
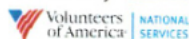
Did you know?

The PACE Interdisciplinary team includes:

Primary Care provider, PACE Center Coordination, Registered Nurse, Home Care Coordination, Personal Care Attendants, Physical Therapy, Occupational Therapy, Recreational Therapist, Social Worker, Dietician, & Community Based Providers.

Transportation is included.

Senior CommUnity
Care of Kentucky



1(888) 757-7510 | TTY: 711 or 800-648-6057

PACE participants may be fully and personally liable for the costs of unauthorized or out-of-PACE program agreement services.



ACTIVE CHOICES

An evidence-based telephonic program designed to increase regular, health-enhancing physical activity in older adults

Who should join?

People 60 & older who are looking to:

- Work with a trained program instructor
- Change physical activity habits to improve quality of life
- Improve endurance, strength, and vitality
- Learn stretching and safety tips & techniques

Program components:

- **FREE** 6-month program
- Initial 30-minute session to develop a personalized physical activity plan
- Follow-up telephone contacts
- Customized assistance in physical activity planning & problem solving

Contact us to learn more:

www.kipda.org
502-266-5571

This information is made possible by state and/or federal funding provided by the Kentucky Department for Aging & Independent Living.

Small gifts for participants

WHO DO YOU CALL?

If you are experiencing any issues/concerns related to the City, please refer to the contact information below:

TOPIC	NAME	PHONE#
Fire safety; free smoke alarms	Chief Charles Mucker	502-449-5025
Public Safety	Chief Emery Frye	502-448-6181
Infrastructure issues/concerns	Manager Steve Lingerfelt	502-449-5000, option 1
Code violations	Code Enforcement Dept	502-449-5000, option 2

For other city-related issues/concerns, please contact:

Mayor, Maria Johnson: 502-977-1638
City Clerk, Mitzi Kasitz: 502-449-5000

City Council Members:

Tiffany Burton-McBroom: 502-938-8932
Kelly Gibson: 502-965-8533
Saundra Gibson: 502-609-2131
Shanell Thompson: 502-851-4110
Wendell Vincent: 502-572-6151
Danielle Wakaba: 502-653-1194

For upcoming events, forms & documents, council meeting minutes, Heritage rental information, and other valuable information, please visit our website at shivelyky.gov

We look forward to hearing from you. Give us a call!

Access free training & resources to help you build skills & confidence to provide care at home.

Trualta is an online platform designed to help families build skills to manage care at home for their aging loved ones. Improve confidence, reduce stress and prevent burnout by learning care skills. Once you are registered, you have unlimited access to their articles and tips about caring for your loved one.

Trualta is really easy to use. All you will need to start is a computer, tablet, or smartphone. With lessons ranging from 5 minutes to 2 hours, Trualta makes it easy for you to fit caregiver training in whenever it works for you.

Get access to **FREE** online educational resources to help caregivers like you!

Visit wecareky.com



Contact us to learn more about Trualta today!

© 2024 WeCareKY

Funds are authorized through this agreement to GCS, through funds awarded by the Department for Aging and Independent Living (State funds) or through the Department for Aging and Independent Living with funds from the U.S. Department of Health and Human Services (Federal funds).

MAYOR MARIA JOHNSON & WAINWRIGHT LAVENTIS

PRESENTS

401(k) WORKSHOP

We invite you to our free 401(k) workshop to learn how to navigate market volatility and strengthen your retirement strategy.



Date: Saturday, August 9, 2025

Time: 10:30 am – 11:30 am

Location: Shively City Hall

3920 Dixie Highway

RSVP: 502-977-1638



Shively City Hall
3920 Dixie Hwy.
Shively KY 40216
(502) 449-5000
www.shivelyky.gov

Prsrt Std
U.S. Postage
Paid
Louisville, KY
Permit No. 742

IMPORTANT PHONE NUMBERS

Shively Police Dispatch
(502) 448-6181

Crime Tip Line
(502) 930-2773

Shively Fire Department 911

Shively City Hall (502) 449-5000
Mon – Fri 8 – 4:30 pm

Shively Public Works Department
(502) 449-5010
Mon – Fri 6:30 – 3 pm

Shively Public Library
Mon. – Thurs. 10 am – 9 pm
Fri., Sat. 10 am – 5 pm
Sunday Closed
(502) 574-1730

Shively Post Office
3131 Crums Lane
Mon. – Fri. 8 am – 5 pm
Sat. 9 am – 1 pm
Sunday Closed
502-449-2657

Mayor

Maria D. Johnson, Mayor

Phone (502) 977-1638

Maria.Johnson@shivelyky.gov

City Council Members

Sandra Gibson
Phone: (502) 609-2131
saundragibson@shivelyky.gov

Shanell Thompson
Phone (502) 851-4110
shanell.thompson@shivelyky.gov

Kelly Gibson
Phone: (502) 965-8533
kelly.gibson@shivelyky.gov

Wendell Vincent
Phone: (502) 572-6151
wendell.vincent@shivelyky.gov

Tiffany Burton-McBroom mph
Phone: (502) 938-8932
tiffany.mcbroom@shivelyky.gov

Danielle Wakaba
Phone: (502) 653-1194
daniell.wakaba@shivelyky.gov



Follow us on facebook



Visit us @ www.shivelyky.gov

