

# SHIVELY BULLETIN

Vol. 29 No. 3

[www.ShivelyKy.gov](http://www.ShivelyKy.gov)

November 2021



**@ the City of Shively  
holiday reception  
December 11th  
2pm-4pm @ City Hall  
(There will be an  
"ugly sweater" contest)**



## Mayor's Holiday Message

Season Greetings:



On behalf of the City of Shively, I wish happy holidays to all. During this festive time of year, is the time that we give thanks, celebrate and share special stories and moments with our family, friends and loved ones. As we begin to look forward to the New Year, I pray that it will come with new beginnings and a wealth of opportunities for each of you.

Our Shively community is widely known as a compassionate and friendly place that fosters goodwill and generosity toward those in need. Loving and respecting your neighbors remain a key factor in having harmony in our community. As we gather together during the holidays, please think about the sacrifices we witnessed from our first responders during Covid and be thankful for our blessings, while we remember those who are less fortunate.

I offer my sincere thanks to all of our neighbors for your collaboration, cooperation, and support. You are the foundation of this community and your engagement will contribute significantly to the progress of our City. In 2022, I am looking forward to transformation of new possibilities and opportunities that will come our way.

Thank you for your kind words of encouragement throughout this year. I am sincerely honored and grateful to be your Mayor. May God continue to bless you and your families and our great City of Shively.

With warm holiday wishes,

Beverly Chester-Burton

*Beverly Chester-Burton, Ed.S.*

Beverly Chester-Burton, Ed.S.

Mayor of Shively

#TogetherWeWin

#Communityofpeaceandunity



**Santa Claus is coming to  
Shively City Hall**

**Saturday, November 27<sup>th</sup> 4:30-6:30**

**Come join us for light  
refreshments, do not forget  
your camera!**



The fall season is here again. The leaves will be falling, and everyone will get a break from cutting grass. Among other things, the works department will be getting ready for the holidays.

Probably one of the most important jobs of the works department is providing waste removal for Shively residents. Your weekly waste toter needs to be out by 6:30 am with the lid closed and facing forward towards the street. Cans that are turned around with the toter wheels toward the street are

more difficult to empty and put undue stress on the toter. Don't put anything around the toter that would make it more difficult for the operator. Recycle toters (green) need to be used for recycling only! Recycle waste is getting harder to dispose of and it needs to be free of anything that is not recyclable. Yard waste needs to be in cans, paper bags or recyclable plastic bags, no regular plastic bags. Large item pick up days can be confusing at times. We pick up half the city one week then the other half the following week. If your trash toter gets picked up on Wednesday, your large item pick-up day is the second Friday of every month. If your trash toter gets picked up on Thursday, your large item pick-up day is the third Friday of every month. Try to limit your large items to three and bag up any loose items for easier and safer disposal. The waste truck drivers do a great job and have a lot of responsibilities with many hazards.

During the fall season the works department will be trying to keep the stormwater running by cleaning drains of leaves and other debris. Residents can help by minimizing the amount of leaves and trash that ends up in the water ways that cause drains not to function properly. The works department continues to work on drainage projects and residents needs.

As mentioned earlier we are getting ready for the holiday season. We will be added more holiday decorations to the Shively City Park. I looked forward to everyone visiting and enjoying the park during the holiday season.

Sincerely,

Jeff Early (Director of Shively Works Department)



The City of Shively presents:

## Lunch and Learn

**VITA VOLUNTEERS HELP OVER  
3 MILLION PEOPLE GET  
\$4 BILLION BACK EACH YEAR**

Help workers get back more of the money  
they've earned.



**VITA** is offering free tax filing, real human support. January 22, 2022 to April 12, 2022, every Tuesday evening 6-9- and Saturday 9-noon, 3920 Dixie Hwy. Tax preparers will be trained by VITA and National Association of Accountants will be preparers. There is no cost but may be based on income.

**\*Calling All Seniors, Veterans & Their Families**

**Seniors**

**Veterans**

**Caregivers**

**Family**

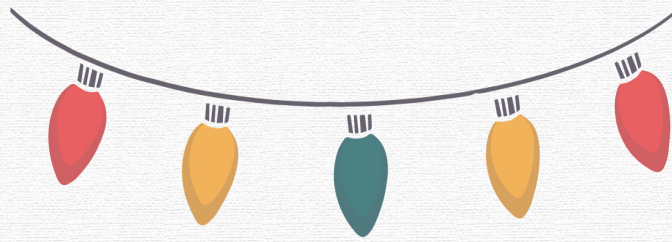
**Join us as we discuss:** general financial reminders and tips, becoming paperwork prepared for most situations, fraud and scam alerts and protections, and the importance of overall health and wellness

**January 8th, 2022, 11a.m. to 1p.m.**

City of Shively, City Hall  
3920 Dixie Hwy, Shively 40216

Presented by Gigi Talbott (KMN/LTP)  
Materials provided by The Consumer Financial Protection Bureau

All Attendees will receive lunch and presentation materials. Resource information will be available on Second Chance Banking, Income Taxes, Stimulus Money, Healthy Living and more. Door prizes are available. Call Gigi at 502-356-2995 for more information.



## LIGHT UP SHIVELY!

**Saturday, 11/27 4:30 - 6:30 pm**

**city hall - 3920 Dixie Hwy.**

**Cookies & refreshments will be served**

**Santa will be stopping by for pictures!**

**come join us, free event**



## **SHIVELY POLICE DEPT. SHIVELY CARES BLANKET & COAT DRIVE**

**SERVING AND PROTECTING THE PEOPLE**

**THE HOLIDAYS ARE A TIME FOR GIVING. YOU CAN PROVIDE WARMTH  
AND CARE RIGHT HERE IN SHIVELY.**

**DONATE A NEW, NEARLY NEW, COAT OR BLANKET  
FOR FAMILIES IN NEED.**



---

## *Annual Christmas Decorating Contest*

The City of Shively will be sponsoring the “Annual Christmas Decorating Contest”. The contest is open to any citizen of Shively who thinks they have done the “Best Job” of decorating their house/yard for Christmas. To enter call 449-5000 or stop by Shively City Hall, 3920 Dixie Hwy. on or before December 15th. When you call to enter we will let you know the judging date and time.

### **WINNER OF THE 2021 ANNUAL HALLOWEEN DECORATING CONTEST**

Thank you to everyone that entered the contest. The judges were very impressed!

**Top Honor to Elliott Hawkins, 2127 East Lane.**

Shively wants to thank everyone that volunteered their time and candy to the 2021 Trunk-or-Treat in Shively Park. Hope to see you all next year.



---

During this holiday season, Shively wanted a way to give back. We have again become a **Toys for Tots** official donation location for 2021! We are taking toys, as well as monetary donations that can be used to purchase toys. If you, friends, or families wish to donate for children in need, please bring your donations to Shively City Hall Monday – Friday 8:00 a.m. – 4:30 p.m. Toys will be picked up December 8.

Please help Shively bring joy to many deserving children!

Thank you and happy holidays!





The Shively Farmers and Artisans Market went out with a bang this season. Market Managers Andrew and LeTicia collaborated with the Shively City staff and Council to bring a Trunk or Treat, tractor ride, face painting, stilts acrobatics, and a kids costume contest!

Children ages 0-11 from all over the community were allowed to enter the contest for a chance to win the 1st ANNUAL KIDS COSTUME CONTEST HALLOWEEN TROPHY. Below is the runner up, Corrina, age 5, and Amari, age 3, our grand prize winner.

The farmers market managers would also like to thank our incredible volunteer, Rachel Szerletich, community members, vendors, and the Shively City Hall staff for their contributions and support as we wrapped up a very successful market season.

Here is some safety information on candles. Candle use is a growing concern as a fire cause and currently is the fifth leading cause of residential fires.

### **Candle Safety**

From 2014-2018, U.S. fire departments responded to an estimated 7,610 home structure fires that were started by candles per year. These fires caused an annual average of 81 deaths, 677 injuries and \$278 million in direct property damage.

### **Facts**

December is the peak month for home candle fires. More than one-third of home candle fires started in the bedroom. Three of every five candle fires start when things that can burn are too close to the candle.

### **Safety Tips**

Blow out all candles when you leave the room or go to bed. Avoid their use in areas of the house where people may fall asleep.

Keep candles at least one foot away from anything that can burn.

Use candle holders that are sturdy and won't tip over easily.

Put candle holders on a sturdy, uncluttered surface.

Light candles carefully. Keep your hair and any loose clothing away from the flame.

Don't burn a candle all the way down — put it out before it gets too close to the holder or container.

Never use a candle if oxygen is used in the home.

Have flashlights and battery-powered lighting ready to use during a power outage. Never use candles.

**Col. Charles D. Mucker**  
Fire Chief  
Shively Fire Department  
1800 Park Drive  
Shively, KY 40216

*The City of Shively Welcomes New Fire Fighters: Devin Bannister, Brandon Smith, Andrew Harris and Cash Cameron!!*

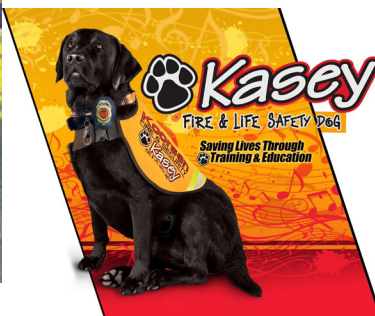




# SHIVELY FIRE DEPARTMENT 2021

# CHILI COOK-OFF

HOPE YOU WILL JOIN US NEXT YEAR!



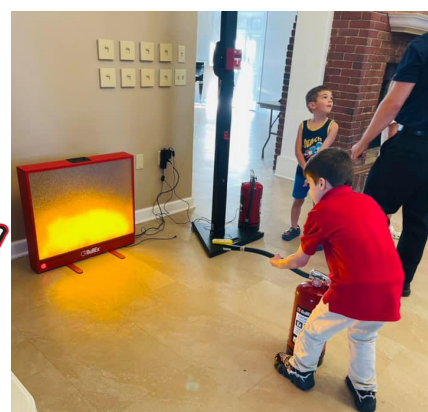
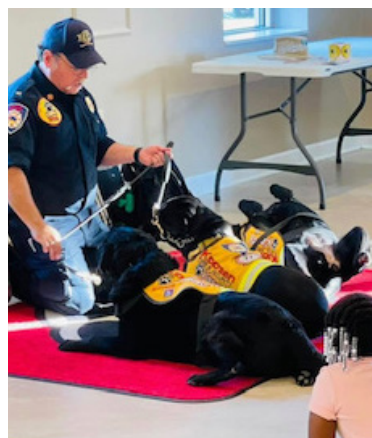
Beverly Chester-Burton and Fire Chief Charles Mucker presented a trophy to the winner!

Congratulations, resident Mary E. Washburn Hampstead Dr.



The fire department may not have won the cook-off but did take a trophy home for closest to the hole contest.

Congratulations, Sergeant Rhett Sample



Breast Cancer Screening...  
**MAMMOGRAMS**  
FOR WOMEN 40 YEARS AND OVER



## Shively City Hall

3920 Dixie Hwy.  
Louisville, KY 40216

**Saturday, December 4<sup>th</sup>**  
8:30am - 3:30pm

**Call to schedule an appointment**  
**502-852-6318**

All insurance filed with University of Louisville Hospital  
Proper ID and Insurance Card required  
All COVID-19 guidelines followed

*If you have received the COVID-19 vaccine, you will be eligible for a mammogram six weeks after final dose. If you have tested positive, currently have COVID -19 or been in contact with someone testing positive for Covid-19, you are not eligible for screening.*



Brown Cancer Center  
**U of L** Health



8-7-2021



Shively City Hall  
3920 Dixie Hwy.  
Shively KY 40216  
(502) 449-5000  
[www.shivelyky.gov](http://www.shivelyky.gov)

Prsrt Std  
U.S. Postage  
Paid  
Louisville, KY  
Permit No. 742

## **IMPORTANT PHONE NUMBERS**

**Shively Police Dispatch**  
**(502) 448-6181**

Crime Tip Line  
(502) 930-2773

**Shively Fire Department 911**

Shively City Hall (502) 449-5000  
Mon – Fri 8 – 4:30 pm

Shively Public Works Department  
(502) 449-5010  
Mon – Fri 6:30 – 3 pm

Shively Public Library  
Mon. – Thurs. 10 am – 9 pm  
Fri., Sat. 10 am – 5 pm  
Sunday Closed  
(502) 574-1730

Shively Post Office  
3131 Crums Lane  
Mon. – Fri. 8 am – 5 pm  
Sat. 9 am – 1 pm  
Sunday Closed  
502-449-2657

## **Mayor**

**Beverly Chester-Burton, Mayor**

Phone 447-0097

[b.chesterburton@shivelyky.gov](mailto:b.chesterburton@shivelyky.gov)

## **City Council Members**

Sharon Baker  
Phone 741-0112  
[sharon.baker@shivelyky.gov](mailto:sharon.baker@shivelyky.gov)

Wendell Vincent  
Phone 572-6151  
[wendell.vincent@shivelyky.gov](mailto:wendell.vincent@shivelyky.gov)

Maria Johnson  
Phone 409-0401  
[maria.johnson@shivelyky.gov](mailto:maria.johnson@shivelyky.gov)

Shanell Thompson  
Phone 851-4110  
[shanell.thompson@shivelyky.gov](mailto:shanell.thompson@shivelyky.gov)

Chester Burrell  
Phone 224-0565  
[chester.burrell@shivelyky.gov](mailto:chester.burrell@shivelyky.gov)

Tiffany Burton - McBroom MPH  
Phone 938-8932  
[tiffany.mcbroom@shivelyky.gov](mailto:tiffany.mcbroom@shivelyky.gov)



Follow us on facebook



Visit us @ [www.shivelyky.gov](http://www.shivelyky.gov)